



Sibuns

FUNERAL DIRECTORS
&
ADVISORS

EST
1899

INTRODUCING SIBUNS

www.sibuns.co.nz

Sibuns

FUNERAL DIRECTORS
&
ADVISORS

EST
1899



SIBUNS FUNERAL DIRECTORS OUTSIDE THE REMUERA PREMISES.

INTRODUCTION: WELCOME TO SIBUNS FUNERAL DIRECTORS & ADVISORS

For over 100 years Sibuns Funeral Directors & Advisors have built a reputation for offering excellent service and genuine, caring assistance to the families of Auckland.

We hope the following information will be helpful if you or someone close to you is thinking about choosing a funeral director or planning a funeral service now or in the future.

From funeral directors to support staff, we are passionate about going the extra mile and we ensure that families can have peace of mind at what can be a very stressful time. It is this extra care and support which makes all the difference.

At Sibuns, you can trust us to listen to what you want and then take care of all the details, so that the funeral service is everything you'd like it to be. Nothing is too much trouble – traditional or innovative, our professional, caring staff will carry out your wishes your way.

Our traditional, turn-of-the-century residence houses a small, personal chapel as well as spacious sitting rooms for families who wish to view their relatives in privacy and comfort.

INDEX: SIBUNS FUNERAL INFORMATION

Page	02 - 03	- Introduction / Index
Page	04 - 05	- Our History / Our People
Page	06 - 07	- Our Services / When Someone you Love Dies
Page	08 - 09	- Arranging a Funeral / Making the Right Choices
Page	10 - 11	- Taking Care of the Details - Spending Time with Your Loved One
Page	12 - 13	- Is Embalming Necessary / Burial or Cremation
Page	14 - 15	- FDANZ Pre-planned & Pre-paid Funerals
Page	16 - 17	- Sibuns Complimentary Bereavement Support - Sibuns Monumental Services
Page	18 - 19	- Repatriation, Compassionate Airfares / Funeral Grants - FDANZ



THE SIBUNS HEARSE FLEET CIRCA 1950, OUTSIDE THE AUCKLAND MUSEUM.

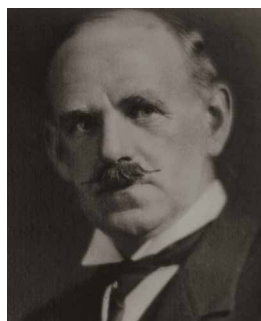
OUR HISTORY: A TRADITION OF SERVICE SINCE 1899

Over the years Sibuns Funeral Directors & Advisors have built a reputation of offering excellent service and genuine caring assistance to the families of Auckland. Located in Remuera, in Auckland's eastern suburbs, Sibuns is positioned in one of the city's oldest residential areas.

First established in Wellington in 1899 by Mr Watney Sibun, Sibuns moved to Newmarket, Auckland in 1913. In 1989 after purchasing C.H. Barker Funeral Home in Onehunga, Sibuns again moved, this time to Remuera. In 1996 the old established funeral firm of WH Tongue, originally situated at No.1 Mt Eden Road, joined with Watney Sibun. Sibuns now belongs to Bledisloe New Zealand – a group of more than 20 funeral firms & monumentalists nationwide. Through joining together, we are able to share professional development and industry knowledge, and set higher standards in the funeral profession nationwide.



SIBUNS PREMISES - 582 REMUERA RD



MR WATNEY SIBUN



MRS WATNEY SIBUN

Sibuns has continued to be an important part of the wider Auckland community for over 100 years and today along with Mr Watney Sibuns grandson, John Sibun, our dedicated team are passionate about providing a service that continues the Watney Sibun tradition. The Sibuns approach is what you would expect from a funeral firm that has been in existence for over a century: Friendly, understanding and, above all, sincere. As members of the Funeral Directors Association of New Zealand (FDANZ) we are pledged to uphold the highest professional standards.

Sibuns Funeral Directors & Advisors is located in a gracious turn-of-the century residence and offers a small personal chapel, spacious sitting rooms for families who wish to view their relative at our place, parking, as well as a casket display room to assist you in your choices. We are also well known for our distinctive fleet of cars and hearses – a tradition started by our founder, Mr Watney Sibun.

OUR PEOPLE: A TEAM YOU CAN RELAY ON TODAY & TOMORROW

At Sibuns, our funeral directors and support staff are very much part of the community and are passionate about providing a professional and caring service.

Please go to our website (www.sibuns.co.nz/our-team) to find each of our staff members personal profile information, so you can get to know us a little better. Please feel free to call us or even come to our premises for a cup of coffee and a sit down meeting. Alternatively we are able to come to you.

OUR SERVICES:

Sibuns can provide full & comprehensive funeral services as well as small private farewells. To assist families during their time of bereavement, Sibuns Funeral Directors and Advisors can provide a funeral to suit your needs and your financial circumstances. Please feel free to discuss your budget with us.

FUNERAL COSTS:

We will assist you in all the decision-making regarding a funeral. The many aspects of putting it together incur a number of costs, below are listed most of details which need to be considered when arranging a funeral.

- Professional Service Fee
- Transfer into our Care
- Embalming / Mortuary Care
- Casket Choice
- Hearse Hire
- Celebrant / Minister / Priest
- Chapel / Venue Hire
- Reception Venue Hire & Catering
- Service Sheets
- Casket Floral Tribute
- Committal & Venue Flowers
- Newspaper Notices
- Cremation Fees
- Ash Urn
- Ash Interment
- Cemetery Fees
- Grave Marker
- Cremation Permit / and or Doctors Fees
- New Zealand Death Certificate
- Monuments / Plaques
- Memorial Books
- Funeral Service Recording
- Photo Tribute Production DVD

If a more simple, private service or farewell is appropriate we can cater to your needs.

WHEN SOMEONE YOU LOVE DIES:

Whether a death occurs in a hospital, rest home or at a private home a doctor needs to certify the death by completing a Medical Certificate of Causes of Death. If cremation is decided upon a doctor needs to sight the body, then our funeral directors can transfer the deceased into our care. A call to us for advice and assistance at this time will help clarify the situation, as the manner of death may impact the events that follow.

If a funeral director has already been involved to convey the body to a public mortuary, for example if the death occurred in an accident and the coroner is involved, the family will still need to organise the funeral and will be able to make their own choice of funeral director. The family is under no obligation to use the funeral director contracted for the original transfer.



SIBUNS MEETING ROOMS ARE VERY PRIVATE



SIBUNS OFFER PRIVATE & QUIET VIEWING ROOMS



MARK, KAYE, SUSAN & SHANE OUTSIDE THE WATER FEATURE AT AUCKLAND'S HOLY TRINITY CATHEDRAL.

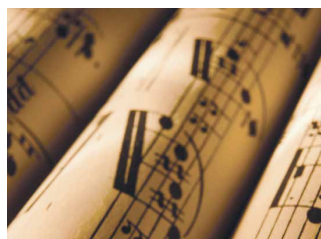
ARRANGING A FUNERAL: THINGS YOU SHOULD THINK ABOUT

After the death of a family member or close friend, it is important to know that you can depend on experienced, professional people to make all the arrangements to ensure the funeral flows smoothly.

It is important that you choose the funeral ceremony that is right for you and your family. Sibuns Funeral Directors & Advisors can guide you through the many choices available, and will take care of all the details. Our caring team of professionals will liaise with clergy and celebrants, doctors, hospitals, government departments, coroners and other officials, crematoriums and cemetery authorities so you don't have to worry.

We can also arrange music and musicians including an organist, place notices in the newspapers, and provide vehicles, order family flowers, organise the audio or video/DVD recording of the service, arrange the placement of ashes and memorials, and anything else you require.

The staff at Sibuns are available to speak to local community groups and schools about funerals, and we are also pleased to host community groups at our premises.

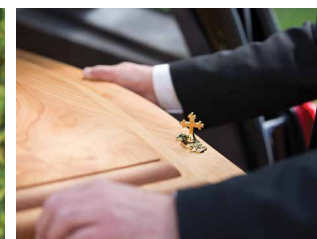


MAKING THE RIGHT CHOICES:

Sibuns Funeral Directors & Advisors can explain the choices available:

- The different types of ceremony, religious or otherwise
- The best location for the service: a church or chapel, at home, at the graveside or crematorium
- Who should officiate: a priest, minister, celebrant or family members
- Whether you want to view the deceased, and where the viewing should be
- Whether you want to have a burial or cremation
- Whether you want flowers or charitable donations
- The most appropriate funeral notice
- Casket selection
- The order of service, the choice of music and hymns
- Venue for a post-funeral get together and how to arrange it

Sibuns can provide full & comprehensive funeral services as well as small private farewells. To assist families during their time of bereavement, Sibuns Funeral Directors and Advisors can provide a funeral to suit your needs and your financial circumstances. Please feel free to discuss your budget with us.





SIBUNS OFFER A WIDE RANGE OF CASKETS & URNS.

TAKING CARE OF THE DETAILS:

Once the choices are made, it is up to you how little or how much you want Sibuns professional and experienced staff to help with arrangements.

We can take care of the following details:

- The registration of death and necessary documentation
- Contacting appropriate burial or cremation authorities, as well as contacting the doctor, coroner or hospital and collection of certificates
- Arranging national or international transportation or repatriation within New Zealand or any other country
- Liaising with clergy or funeral celebrants, assisting with the service and organising funeral details
- The provision and preparation of the casket, which you can select from our on-site showroom
- Embalming to ensure hygienic preservation and natural presentation
- Providing viewing facilities in comfortable premises
- Ordering family flowers for the casket
- Providing transport to and from the funeral in our fleet of hearses and cars.
- Preparing and placing newspaper notices locally or internationally
- Arranging monumental masonry for the memorial stone
- Arranging the scattering or burial of ashes in Auckland or in other centres, as well as providing quality urns

SPENDING TIME WITH YOUR LOVED ONE:

SHOULD WE SEE THE BODY...?

Many people who are hesitant at first later say how much they were helped in the grieving process by spending some time with the body of the deceased before the funeral. It is important to be able to say goodbye to your loved one and to be able to fully accept the finality of death. While the experience varies for everyone, some people may like to spend time seeing, touching or simply sitting with the deceased. It is also a time to leave small mementos with your loved ones – gifts, cards, letters, or any other significant objects that mean something to you or the deceased.

Sibuns Funeral Directors & Advisors offer private and comfortable viewing facilities in our gracious sitting rooms for you and your family to say goodbye to the deceased, or if you would prefer we can easily arrange for their casket to be taken to your home in the days before the funeral ceremony.

SHOULD CHILDREN ATTEND THE FUNERAL...?

Dealing with the death of someone close is difficult at any age. Children and teenagers grieve too, though they may express it differently. The choice of whether to attend the funeral should be left up to the family.

However, in general, children appreciate it later on if they have been involved, even in some small way, because it helps them to feel they are sharing their grief and honouring the person who has died. Just being there can help them understand, even if it takes time for them to deal with what has happened and what it means.

Children often like to draw a picture or write a letter or poem to put in the casket when they spend time with someone who has died.

IS EMBALMING NECESSARY...?

The purpose of embalming is to ensure the sanitation and preservation of the deceased body during the lead up to the funeral. It can also ensure a more natural appearance.

If the funeral is delayed for some reason, or if the body has to be transferred to another city or country, embalming is mandatory. The staff at Sibuns can discuss your individual situation with you and help you make the right choice.

We have experienced, qualified staff who will carry out the embalming process and at all times the body will be treated with the utmost respect and dignity.

Embalming is a skilled process and should only be performed by trained practitioners who are members of the FDANZ and/or the NZ Embalmers Association.

BURIAL OR CREMATION...?

If the deceased has made their wishes known, they are usually followed. If not, it is up to the family to choose. Whatever your choice, Sibuns Funeral Directors & Advisors will be able to take care of the arrangements for you. In New Zealand, there are four options available: burial, cremation, burial at sea or donating a body to medical science.

BURIAL: In the past, this was the most common choice and is still favoured by many. It provides a family with a focal point, a grave to go to where they remember the person who has passed away. Burial involves buying a burial plot, paying an interment fee which covers the cost of digging the grave and usually buying a memorial or headstone. In almost all cases, the places people can be buried are limited by law to official cemeteries or Maori burial grounds.

CREMATION: Cremation provides greater flexibility when choosing a final resting place because there is no restriction on specific places of burial. Ashes can be buried in a cemetery or special memorial area, or they can be scattered somewhere the family or deceased felt appropriate, such as in a garden, at sea, or in a favourite place. Some people split the ashes between different places. A memorial or plaque is often chosen to provide the focal point for the family.

The process of cremation involves putting the casket with the body inside into a cremator - a large metal box with room for only one casket. Cremation occurs at very high temperatures over one to two hours. The ashes are then processed and placed in a container, usually made of pine or an eco wooden urn about 30cm long and 15cm deep. Sibuns Funeral Directors & Advisors have a range of attractive urns available for you to choose from. The ashes of the deceased are available within 48 hours.

BURIAL AT SEA: This requires a special casket, which we can provide. There are specially designated areas off the New Zealand coastline for burial at sea, which we can discuss with you and then help with the arrangements.

BODY, ORGAN OR TISSUE DONATION: If there is interest in the option of organ donation or leaving the body for medical science, arrangements need to be made prior to death. Sibuns Funeral Directors & Advisors can provide information about these options.



SHANE WALKING THE HEARSE AWAY FROM AUCKLAND'S ST. MARY'S CATHEDRAL.

PRE-PLANNING YOUR FUNERAL:

More and more people are asking us about recording funeral service details well in advance, so their wishes will be carried out and their family spared unnecessary worry about the arrangements and costs, at what can be a very difficult time.

Whether you need to plan a funeral now or are just thinking about the future, we are happy to sit down with you and discuss the important information with regards to planning a funeral.

PRE-PAID FUNERALS:

Increasingly, as well as pre-planning a funeral, people also want to put aside an amount towards their funeral. An estimate can be given at today's prices however this figure is not price fixed and maybe subject to inflation. Paying in advance helps to remove the financial burden from your family.

We want you to have peace of mind when you plan your funeral with Sibuns Funeral Directors & Advisors. After discussion with a funeral director at Sibuns, pre payment is held in trust for you or your nominee by the FDANZ Funeral Trust.

Established by the Funeral Directors Association of New Zealand, which represents over 80% of NZ funeral firms, the FDANZ Funeral Trust operates under a trust deed. All trust funds are managed taking into account the appropriate risk profile for pre-paid funeral funds. The Trustees take the advice from an independent actuary prior to setting the investment portfolio for the Trust. The funds are then diversified into a portfolio of on-call

deposits and term deposits of varying duration. The trust deed requires all of the funds in the Trust to be held by a Bank that is registered with the Reserve Bank of New Zealand.

Under current Government policy, pre-paid funerals up to \$10,000 are excluded from asset testing when assessing eligibility for a subsidy in long-term residential care for the elderly.

The FDANZ Funeral Trust is not an insurance policy. No health checks or personal questions are needed. Anyone, of any age or health status, can pre-arrange an FDANZ Funeral Trust funeral with Sibuns Funeral Directors & Advisors.

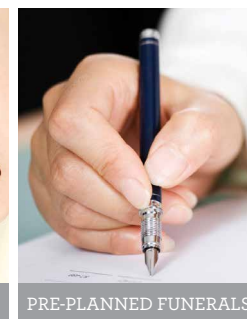
You do not have to prepay in a single payment. If it suits you better, you can arrange to pay in easy instalments, from \$20 a fortnight.



PRE-PAID FUNERALS



SIBUNS OFFERS FDANZ FUNERAL OPTIONS



PRE-PLANNED FUNERALS



CREATE A LASTING TRIBUTE FOR YOUR LOVED ONE WITH SIBUNS MONUMENTAL

SIBUNS COMPLIMENTARY BEREAVEMENT SUPPORT:

Grief is our natural response to loss in our lives. There is no right or wrong way to grieve, and different people have different ways of grieving.

When someone dies, family and friends can find it hard to cope with the tremendous grief they experience and can be unprepared for important decisions and arrangements that need to be made.

After the funeral can be a particularly difficult time, and grief can leave you feeling disorientated, numb, angry, exceptionally tired and sad or lacking in confidence and hope. It is important to not brush these feelings aside - they are an expression of how much the deceased person meant to you and a normal part of the grieving process.

In recognition of this Sibuns provide a complimentary after-care support service - someone to talk to and someone who can provide support and reassurance.

Claire Seel has had many years working as a qualified counsellor and bereavement support person and can provide a sympathetic ear, whether it is just 'being there' or putting you in touch with other support networks.

Claire has helped many families following bereavement:

"I help people as they go through the grieving process and experience feelings of loss and bewilderment. Every person grieves differently and my role is to find out what they need and assist them through the process."

We also offer a free book "Now What? A guide for people living with the death of someone close" by highly regarded grief counsellor and writer Lois Tonkin. A colourful poster, Remembering to Live is also available for children and teenagers.

SIBUNS MONUMENTAL SERVICES:

A LASTING MEMORIAL FOR SOMEONE SPECIAL

At Sibuns Funeral Directors & Advisors we are able to help with all aspects of choosing a lasting memorial for your loved one.

A MEMORIAL IS AS PERSONAL AS YOU DESIRE IT TO BE

With modern technology the choice of photographs and artwork designs can depict the special interests in a person's life whether it be a traditional or contemporary design our team will create something unique and personal. If there is an image that you have designed and want on the memorial that is fine, but it is no problem for us to design and produce something specific for you.

While we can create and custom make a very large range of headstones and plaques in a variety of colours, there are council by-laws in every region of New Zealand that will limit what size memorial you are able to place in a cemetery or crematorium.

Please find enclosed in this pack a range of the monumental products and colours which we are pleased to offer. For more information please phone us on (09) 520 3119 or go to our website: www.sibuns.co.nz



PROVIDING QUALITY CRAFTSMANSHIP WHICH WE GUARANTEE



FOR A LASTING MEMORIAL

REPATRIATION AND COMPASSIONATE AIRFARES:

Repatriation is taking home the body or the remains of someone who has died in a foreign land; a land that is not of their birth or that of their ancestors. There may be a personal desire to be buried in the native country that person was born in or the need to bring someone back to New Zealand.

Sibuns Funeral Directors & Advisors are able to offer expert repatriation of the deceased to all parts of Australia and overseas. In conjunction with this we also provide a service to all the main centres around New Zealand where there is a registered funeral firm.

Air New Zealand offers compassionate airfares to immediate family members needing to change existing bookings or those living out of town needing to travel to another centre to attend the funeral service after a bereavement. Most commonly, the family member applies for a pre approval of refund or part refund after travelling. Your funeral director will be able to help you with the necessary documentation.

FUNERAL GRANTS:

There are funeral grants available from the government for certain situations. When someone dies as a result of an injury, ACC can help towards the costs of the burial or cremation and related ceremonies. A funeral grant can also help pay for some of the costs when someone close to you has died. Sibuns staff are able to help with advice and assistance on the particular services available thorough WINZ and ACC.

FDANZ:

Sibuns Funeral Directors & Advisors is proudly a member of the Funeral Directors Association of New Zealand (FDANZ).

Since it was founded in 1937, the FDANZ has promoted quality, expertise and integrity in the funeral profession, and encouraged the training and education of funeral directors. Today, the FDANZ represents approximately 80% of funeral practices in New Zealand.

As members of the FDANZ, Sibuns follows the Rules of the Association as well as a strict Code of Ethics and Code of Conduct. In keeping with its commitment to high standards of professionalism and ethics, the Association has introduced an independent disputes resolution process.

Registered funeral directors are also required to hold Practising Certificates, which are renewable every three years on presentation of evidence of ongoing training.

Funeral Directors Association of New Zealand: www.fdanz.org.nz



SUSAN & MARK OUTSIDE AUCKLAND'S ST. MARY'S IN HOLY TRINITY.



FUNERAL DIRECTORS
— & —
ADVISORS

EST
1899

SIBUNS FUNERAL DIRECTORS & ADVISORS
582 Remuera Road. Remuera. Auckland 1050. New Zealand
Phone. 09 520 3119 | Fax. 09 520 3116 | Email. staff@sibuns.co.nz
www.sibuns.co.nz

A BLEDISLOE NEW ZEALAND LIMITED FUNERAL HOME. A MEMBER OF THE FUNERAL DIRECTORS ASSOCIATION OF NEW ZEALAND.